

Samsung New PC Studio

Quick Guide



Introduction

New PC Studio is a program that helps you to use the data inside your PC and mobile phone better. New PC Studio allows users to manage not only the music, photos and videos in their PC but also the important personal information such as the phonebook, messages and schedules in their mobile phones by exporting them to PC.

System Requirements for New PC Studio

- **Operating System** : Windows 7, Windows Vista, Windows XP(SP2), Windows 2000(SP4)
- **CPU** : Pentium 600 MHz or higher
- **RAM** : 512MB or more
- **HDD** : 200MB or more available hard disk space
- **Microsoft DirectX 9.0 or higher**

* **New PC Studio does not support Outlook Sync in Windows 2000.**

Connecting the mobile phone and using Stage

Stage is the first screen displayed when you run New PC Studio.

In Stage, you can manage the phonebook, photos and video files with Widget and manage the files in your PC. You can also connect your mobile phone, search files in your mobile phone or upload files to the Web.



1 Connect Mobile Phone.

Shows information about the mobile phone being connected. If the mobile phone is not automatically connected, click this icon to connect it.

Shows the current connection status and connects the mobile phone with New PC Studio.

2 Connected Mobile Phone.

When the mobile phone is connected via USB, a mobile phone icon is displayed.

Click the mobile phone icon to run Mobile Phone Explorer and manage the files in the mobile phone.

Note:

In the mobile phone Menu mode, select **Settings** → **Phone settings** → **PC connections** → **Samsung PC Studio** → <Save>.

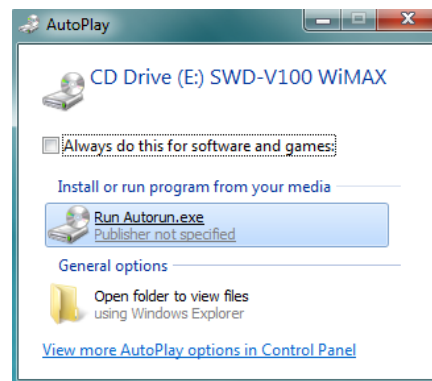


* Connecting the Buzz phone and using it as a WiMAX modem

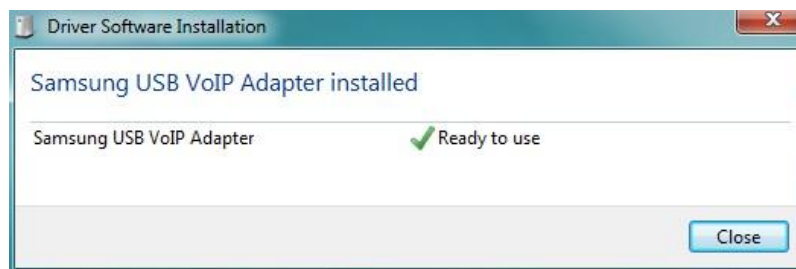
The Buzz phone can also function as a WiMAX modem for PC without using the New PC Studio. To use the WiMAX modem function (tethering), a one-time-only setup is required to install the modem driver.

Installing the driver for WiMAX modem

1. In the Buzz phone Menu mode, select **Settings** → **Phone settings** → **PC connections** → **WiMAX modem** → **<Save>**.
2. Using a PC data cable, connect the multifunction jack on your phone to a PC.
3. At the PC, click **[Run Autorun.exe]** to install the WiMAX modem driver.



4. Click **[Close]** after the driver installation is completed.

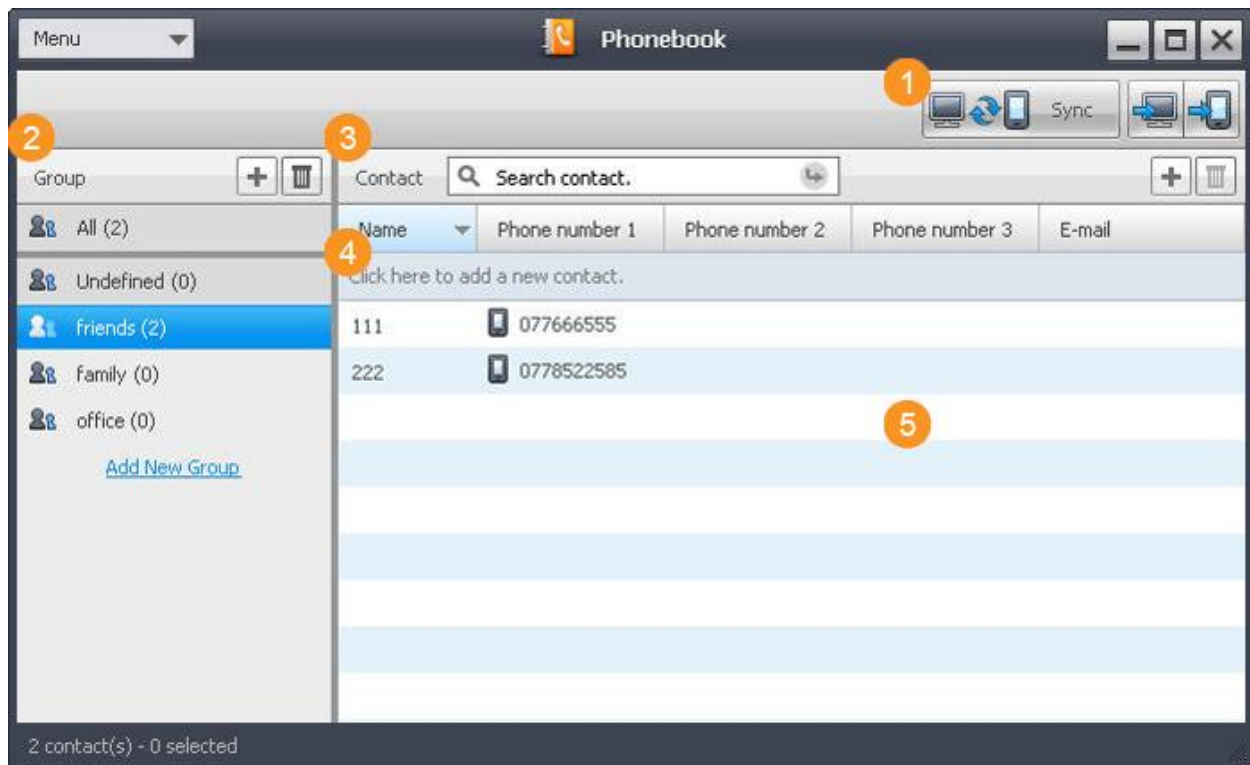


5. You can start browsing the internet with your browser.
 - Driver installation is only required for each PC at first time use only. Subsequently, user only needs to connect using the PC data cable and start browsing.

Using the Phonebook widget

Using the Phonebook widget, you can manage the contacts and contact groups stored in the mobile phone and New PC Studio. You can import the phonebook stored in the mobile phone, edit it and save it in your PC.

Run the Phonebook widget () from the dock.



- 1 Sync contacts between PC and mobile phone.**
Synchronizes the phonebook in the PC and mobile phone, sends the phonebook in the mobile phone to the PC and sends the phonebook in the PC to the mobile phone.
- 2 Manage contact groups.**
Adds or delete contact groups.
- 3 Manage contacts.**

Searches, adds or deletes contacts.

- 4 Enter the name and telephone no. in the editing window of the Phonebook widget and add it to the contact list.
- 5 Display the contacts information in All group or a selected group.

Importing Contacts from different file formats

You can import files stored in the PC or files created by an external program to New PC Studio Phonebook.

Importing from a CSV File (*.CSV)

1. At the Phonebook widget, click [**Menu>Import from PC**].
2. Select a CSV file from Explorer and click [**Open**].
3. Choose how duplicate items will be handled, and click [**OK**].
4. Map the contact items and click [**OK**].
 - It is recommended to use the default encoding method.
 - For CSV files that have been exported from New PC Studio, field mapping is not necessary.
 - ❖ Some CSV files generated from Microsoft Outlook or other third party applications might contain non-standard format and unsupported characters. These CSV files cannot be imported correctly into New PC Studio. Please use the Outlook Sync widget to import the contacts.

Importing from a vCard file (*.VCF)

1. At the Phonebook widget, click [**Menu>Import from PC**].
2. From the bottom of Explorer, select [**vCard file (*.vcf)**] as the file format.
3. Select a file to import to the phonebook and click [**Import**]. (You can also select multiple files.)

Duplicate Item Criteria and How to Import


If a contact's name, telephone number and e-mail in the phonebook are identical, it is considered as the same contact.

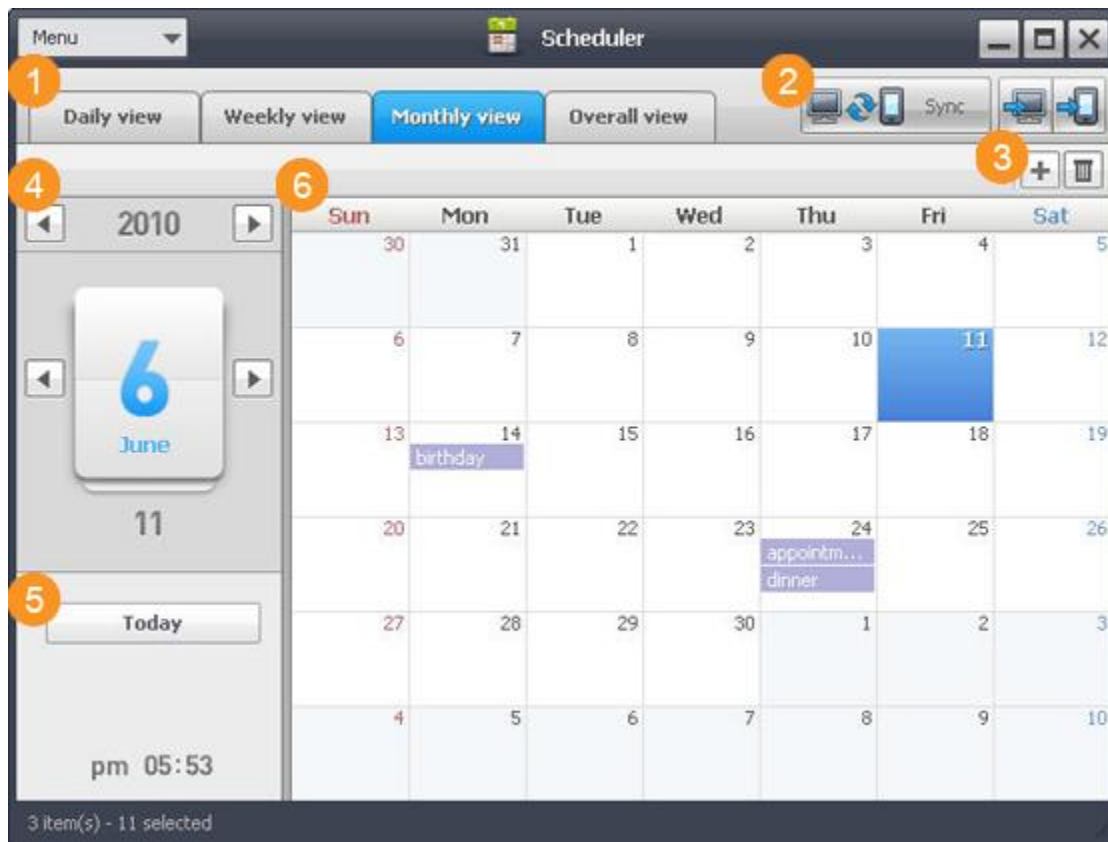
There are three ways of importing duplicated items.

1. **Importing all items:** Existing items are retained, and all items in the imported file are added.
2. **Merging Items:** Duplicate items are overwritten with those in the imported file, and new ones are added.
3. **Replacing existing items:** Existing items are deleted and replaced with those from the imported file.

Using the Scheduler widget

Using the Scheduler widget, you can add and manage schedules in the mobile phone and New PC Studio. You can check your daily, weekly, and monthly or all schedules. Schedules in PC and the mobile phone can be synchronized for your personal schedule management.

Run the Scheduler widget () from the dock.




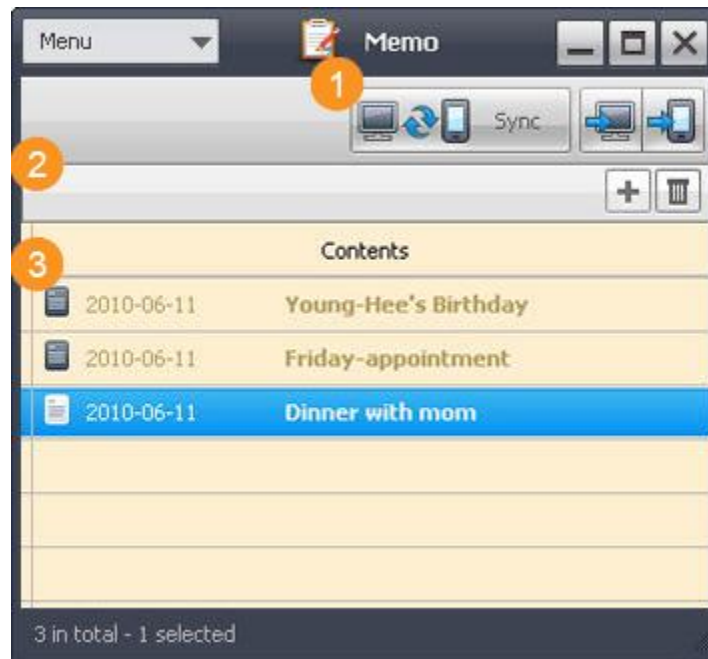
- 1 Manage the daily, weekly, monthly and all schedules.
- 2 Synchronize the data in New PC Studio and the mobile phone.
- 3 Manage the schedule list.

- 4 Change the year, month and date of the schedule and moves to the appropriate page.
- 5 Move to today's schedule list.
- 6 View the daily, weekly, monthly and all schedules.

Using the Memo widget

Using the Memo widget, you can manage the memos stored in the mobile phone and New PC Studio.


Run the Memo widget () from the dock.

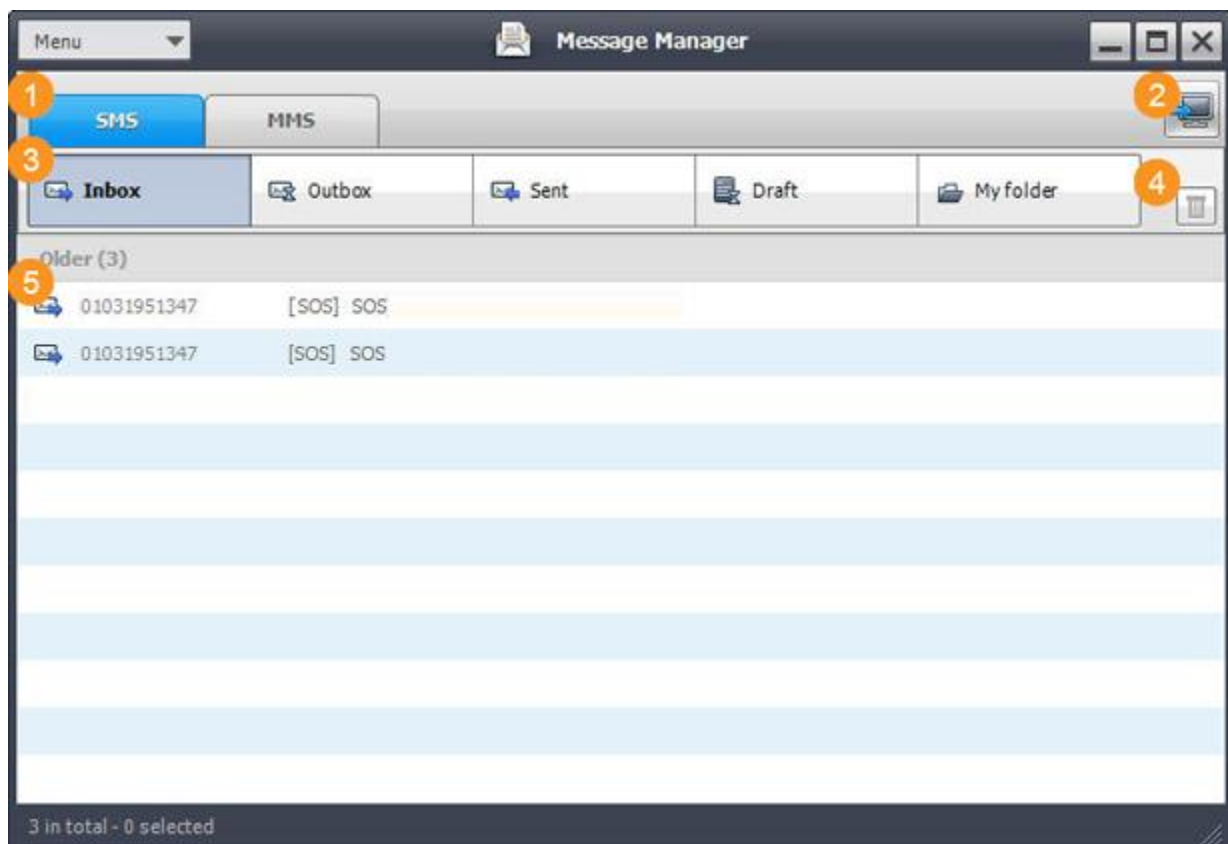


- 1 Synchronize the memo in New PC Studio and the mobile phone.
- 2 Add or delete memo.
- 3 Display the list and contents of memo.

Using the Message Manager widget

Using the Message Manager widget, you can import SMS messages in a mobile phone to a PC and manage them with New PC Studio. This is useful when the mobile phone is running out of available space, or to save important messages for a long time.

Run the Message Manager widget () from the dock.




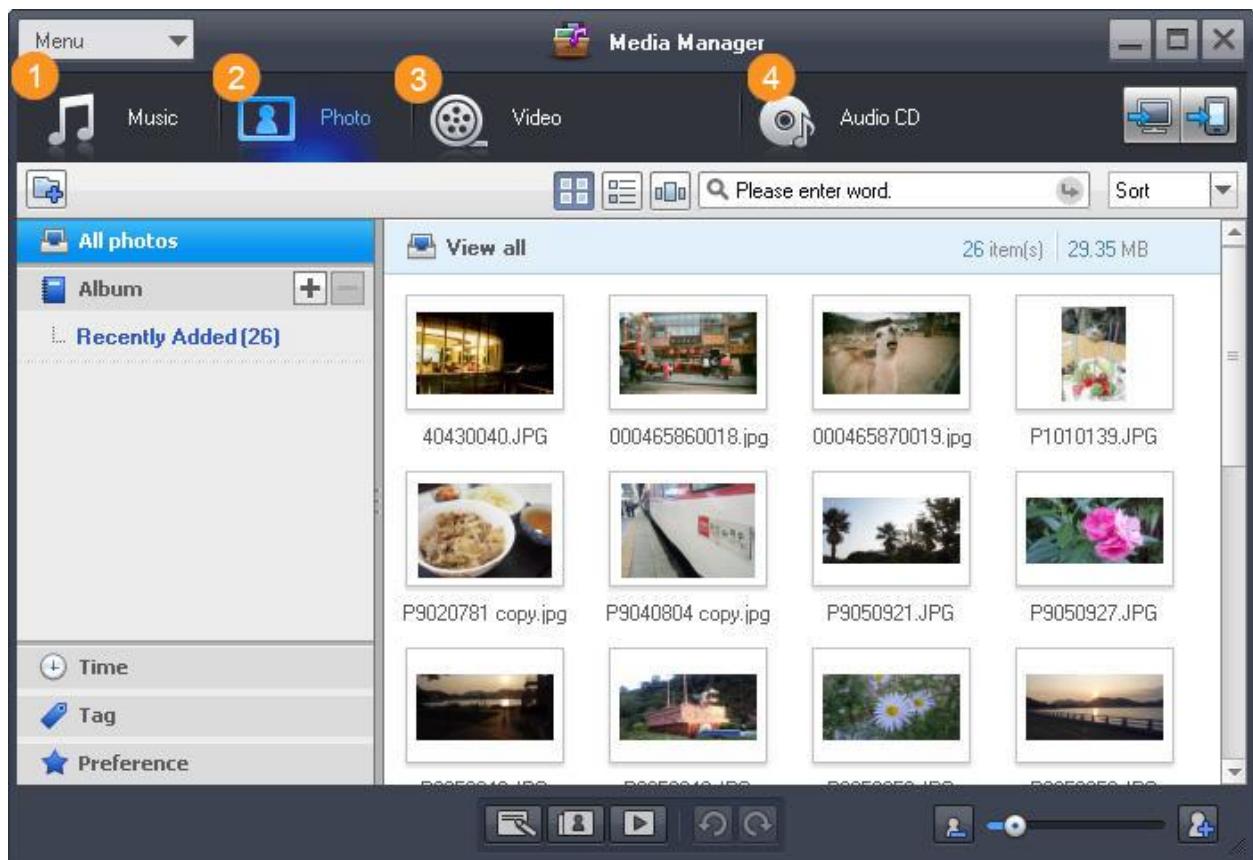
- 1 Select SMS to switch to the SMS screen.
- 2 Select to send the mobile phone messages to the PC.
- 3 SMS messages can be stored and managed.
- 4 Select to delete the messages.

5 Display the messages and corresponding information.

Using the Media Manager widget

Media Manager widgets let you play, organize and edit music, photos, and video files. The widgets are categorized into Music, Photos, Video and Audio CDs. Each icon provides various Media Manager features that are just a click away.

Run the Media Manager widget () from the dock.



- 1 Manage music by folder and play it.
- 2 Manage photos by album. Also includes widgets such as Photo editor and Create slide.


- 3 Manage videos by album. Also includes the Video editor widget.
- 4 Play audio CDs and manage music information. Convert audio CD music into files and store them to your PC.

Using the Outlook Sync widget

Using the Outlook Sync widget, you can sync contacts, schedules, To Dos and memos between Outlook and the mobile phone connected to your PC.

Run the Outlook Sync widget () from the dock.

Note:

If the Outlook Sync widget is not already in the dock, use the Widget Settings () to add the Outlook Sync widget to the dock.

* Outlook Sync is not supported in Windows 2000.




- 1 Select the mobile phone to sync with Outlook.
- 2 Configure items to sync. Select Contacts, Schedule, To Do and Memo items from Outlook to sync with the mobile phone.
- 3 Configure how to deal with conflicting items during sync.
- 4 Start Outlook Sync.

Upgrading mobile phone's firmware

You can check if the mobile phone software is up-to-date and upgrade it to the latest version from your PC with NEW PC Studio installed, without having to visit a Service Center.

- ❖ Some data may be lost during the upgrade.
- ❖ You should backup the files in the mobile phone memory since both data and programs can be deleted.

Run the Upgrade Mobile Phone widget () from the dock.



- 1 Select the connected mobile phone.

- 2 It shows the current version and the new version of the mobile phone to be upgraded to.
- 3 It shows the details of the upgraded version.
- 4 Run upgrade.